

**LIVERPOOL JOHN LENNON AIRPORT
NOISE MONITORING SUB COMMITTEE
16 JANUARY 2009**

**MINUTES OF A MEETING OF THE LIVERPOOL JOHN LENNON AIRPORT NOISE
MONITORING SUB COMMITTEE held on 16 January 2009 in the Cavern Suite.**

PRESENT: Mr M Morris, Chairman
Cllr R Crawford, Hale Parish Council
Mr N Elias, Passenger Representative
Mr D Howard, Wirral Metropolitan Borough Council
Cllr D Knowles, Chairman of Consultative Committee
Mr S Osborne, National Trust
Dr I Rushforth, Liverpool City Council
Mr A Tilston, South Wirral Community

Liverpool John Lennon Airport

Mr A Dutton
Mr C Barnes

Secretariat

Mrs R Graves

Apologies

Mr G Corker, Cheshire County Council
Mr P Hargreaves, Ellesmere Port and Neston Borough Council
Councillor R Oglethorpe, Cressington Ward, Liverpool City Council

1 MINUTES

Cllr D Knowles reported on his attendance at the Defra Seminar on the Guidance for Airport Operators to Produce Action Plans under the Terms of the Environmental Noise Regulations 2006, held on 26 September 2008 for Consultative Committee representatives. The seminar had previewed the consultation document and the requirement to develop action plans to manage noise and discussed the role of the Consultative Committee in the public consultation process of the action plan. The final version of the Guidance was still awaited from the Department of Environment.

RESOLVED:

The Minutes of the meeting of the Sub Committee held on 19 September 2008 be confirmed as a correct record.

2 MEMBERSHIP ISSUES

The Sub Committee noted that Ian Murdoch had replaced Dave Rae as the representative for Liverpool City Council's South Liverpool Neighbourhood Management Team.

Currently on the Sub Committee two places were allocated to cover the Environmental Health Departments of Halton Borough Council, Ellesmere Port and Neston Borough Council and Vale Royal Borough Council. Due to the

**LIVERPOOL JOHN LENNON AIRPORT
NOISE MONITORING SUB COMMITTEE
16 JANUARY 2009**

Local Government Reorganisation in Cheshire, Ellesmere Port and Neston Borough Council and Vale Royal Borough Council would cease to exist and with effect from 1 April 2009 would be replaced by Cheshire West and Chester Council. As a result of this the two places would need to be reallocated and it was suggested that one place be allocated to Halton Borough Council and the other to Cheshire West and Chester Council.

RESOLVED:

That the Secretary write to the Environmental Health Departments of Halton Borough Council and Cheshire West and Chester Council seeking nominations to fill the places on the Sub Committee.

3 NOISE COMPLAINTS LOG

Members considered the Noise Complaints Log for the four month period 1 September to 31 December 2008. Colin Barnes gave a presentation to the Sub Committee on the Noise Log which included an analysis of the number of noise complaints received by date, administrative area, total number of complaints compared to the previous year, the number of complaints and complainants for each month during the period and the number of engine tests carried out in the period.

During this period a total of 62 complaints had been received from 25 complainants. In addition, 58 complaints had been received from one complainant in Chester. The Committee noted that Runway 09 had been in operation during the period and this again had resulted in an increase in the number of complaints from residents in Hale, the Wirral and Flintshire. It was also noted that the KEGUN hold was mentioned in a number of the responses to complaints and it was explained that this hold was located over North Wales and aircraft arriving from the south were directed to the hold if the runway was busy before being radar vectored in to intercept ILS.

RESOLVED:

That the report be received.

4 DATES OF FUTURE MEETINGS

It was agreed that the Sub Committee would meet at 10.30 am on the following dates:

Friday 20 March 2009
Friday 19 June 2009
Friday 18 September 2009
Friday 15 January 2010

These meetings would be held in the Cavern Suite in the Terminal Building.

5 ANY OTHER BUSINESS

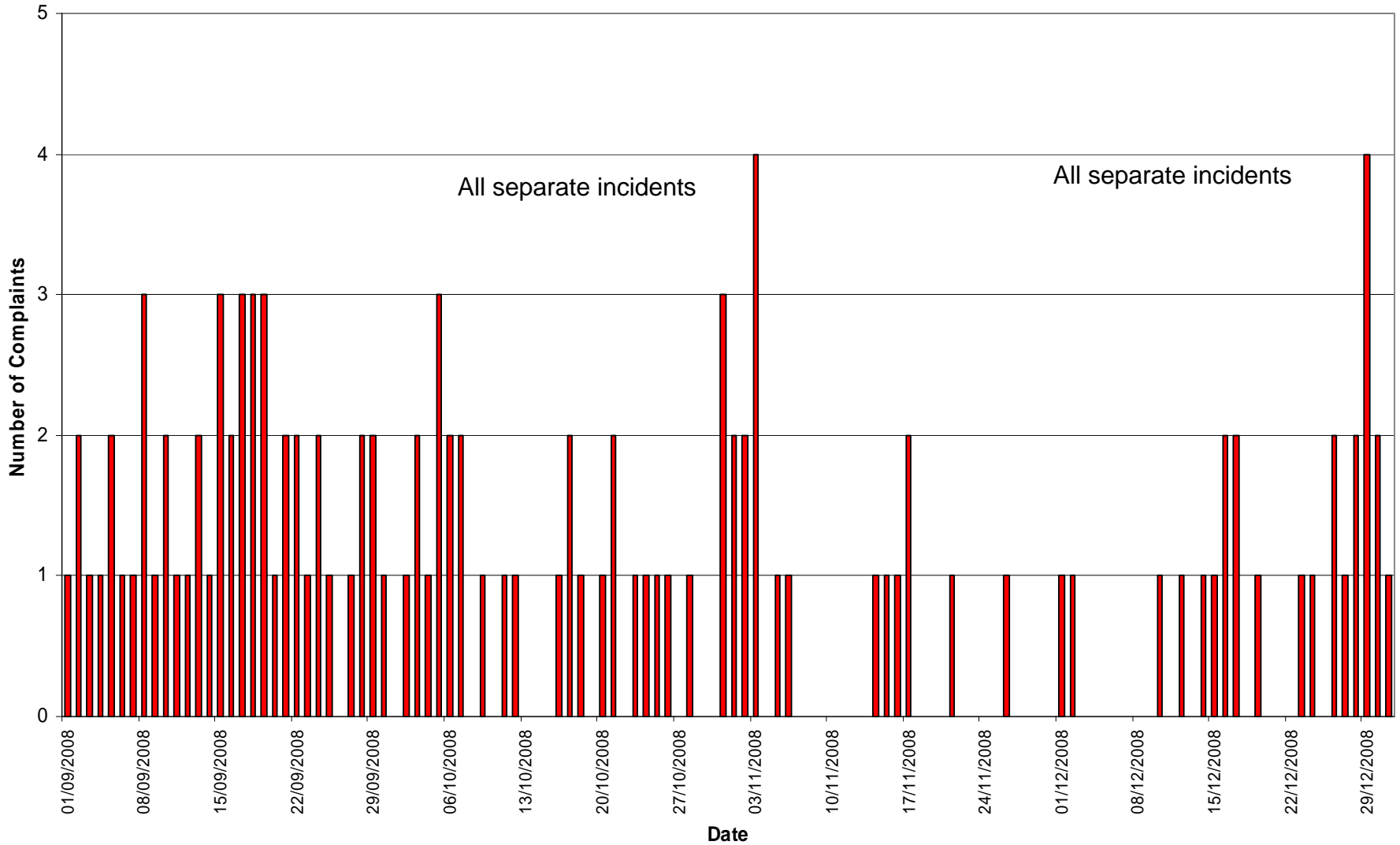
Carbon Capture

The Airport had joined up with Origo Industries to investigate the capture of CO2 emissions from the terminal building. The captured emissions would be recycled through a photo-bioreactor to create algae-based biofuel which could be used to power vehicles at the Airport.

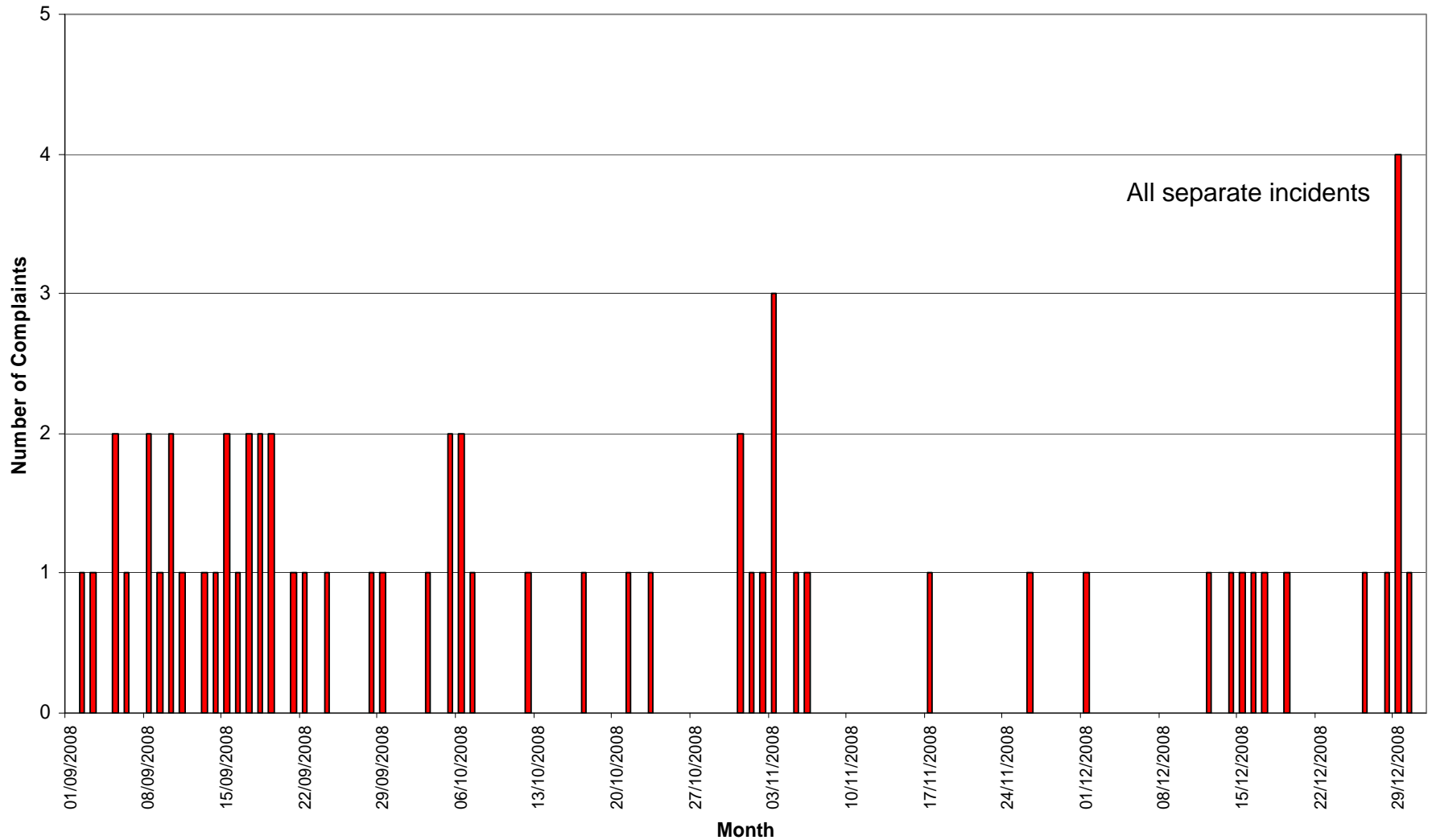
Corporate Social Responsibility

The Corporate Social Responsibility Report 2008 would be published at the end of January. Part of the programme was to establish a Community Investment Fund which would provide funding for local groups, schools and clubs for an event, scheme or provide sponsorship. Also a Charity Fundraising project has been introduced with four charities, chosen by employees, benefiting from the collection boxes in the Terminal Building.

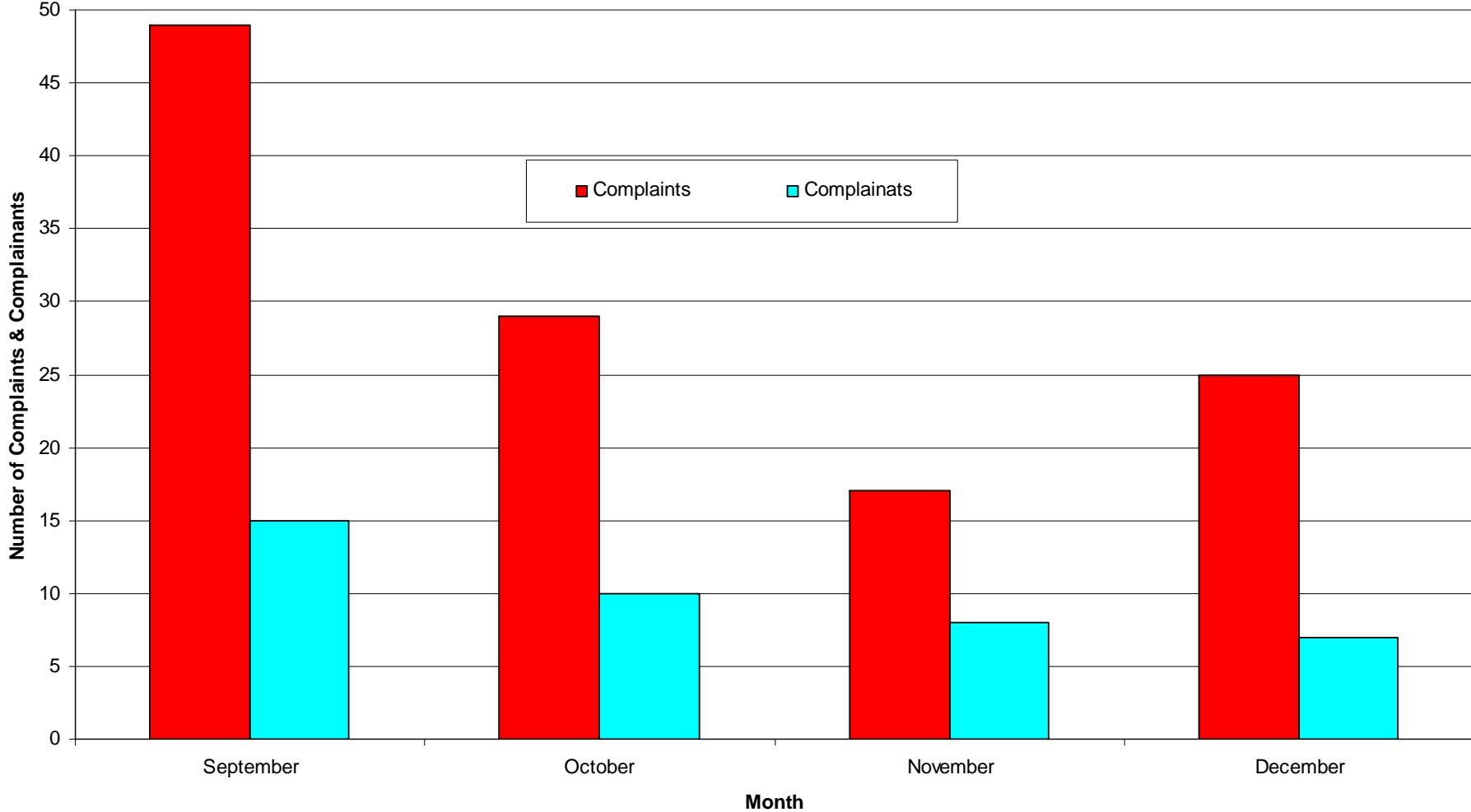
Liverpool John Lennon Airport Noise Complaints By Day 1st September to 31st December 2008



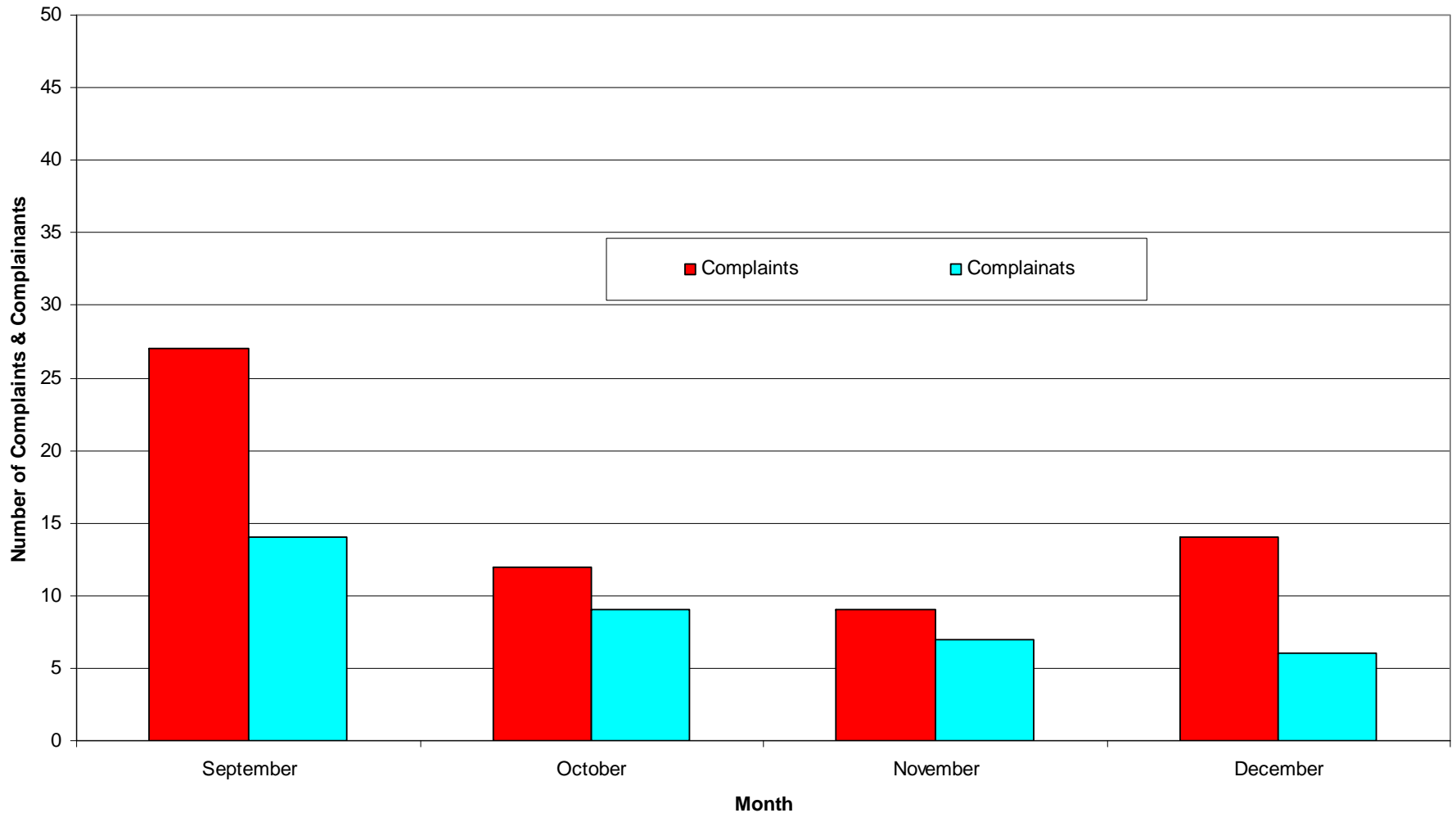
Liverpool John Lennon Airport Noise Complaints By Day For 1st September to 31st December 2008 Without Regular Chester Complainant



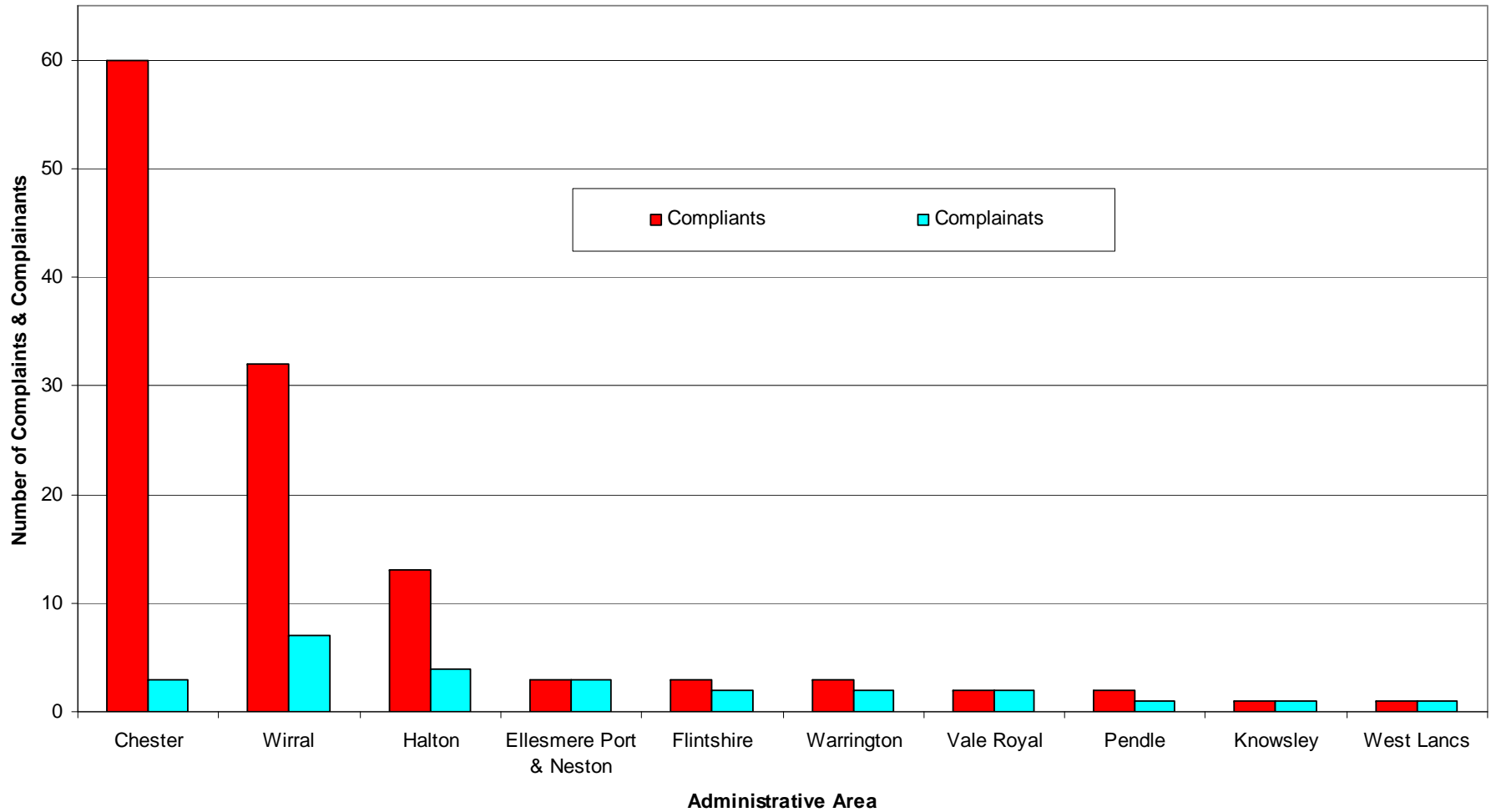
Liverpool John Lennon Airport Complaints and Complainants for 1st September to 31st December 2008



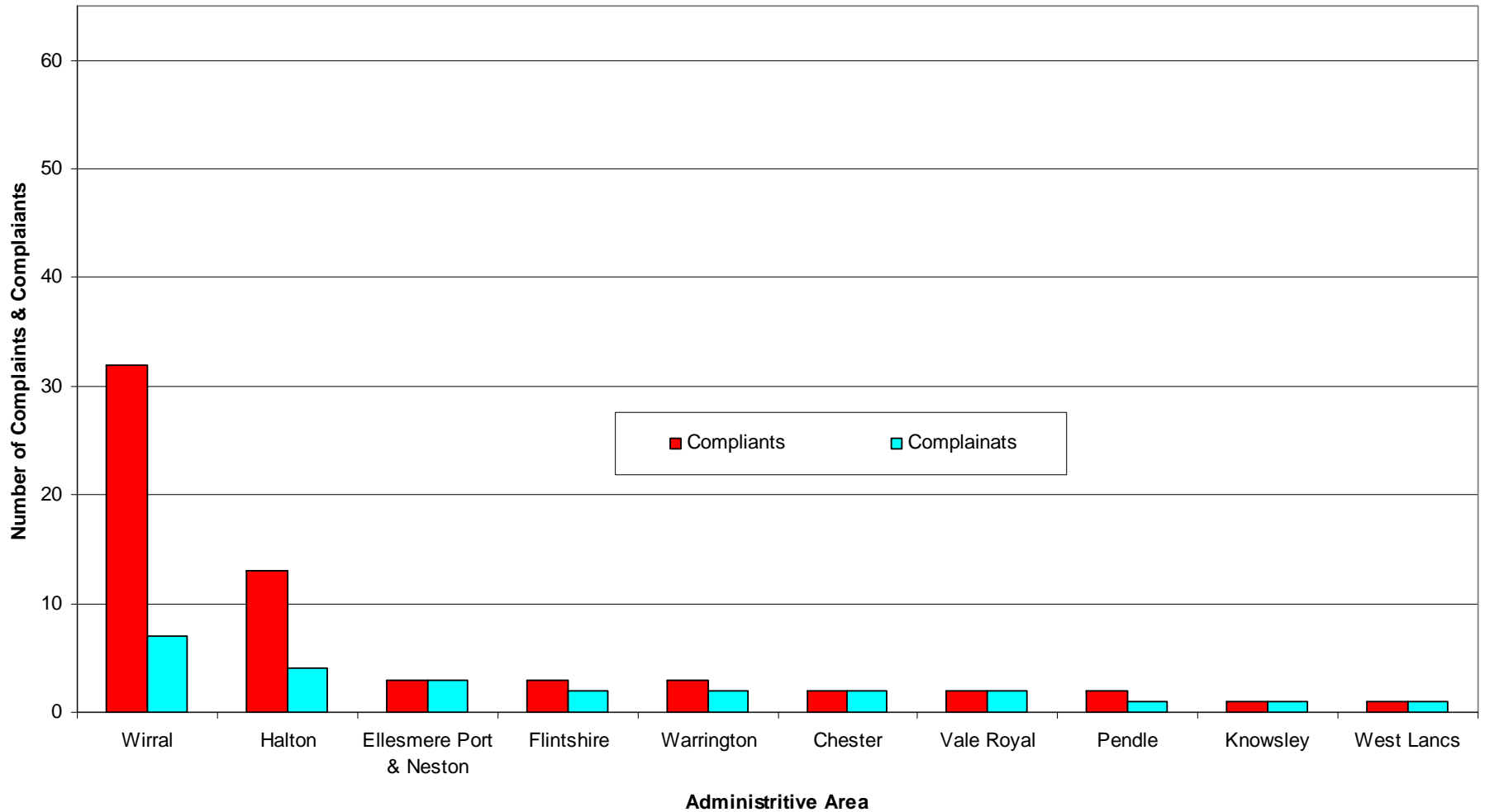
Liverpool John Lennon Airport Complaints and Complainants with Administrative Area, 1st September to 31st December 2008 Without Regular Chester Complainant



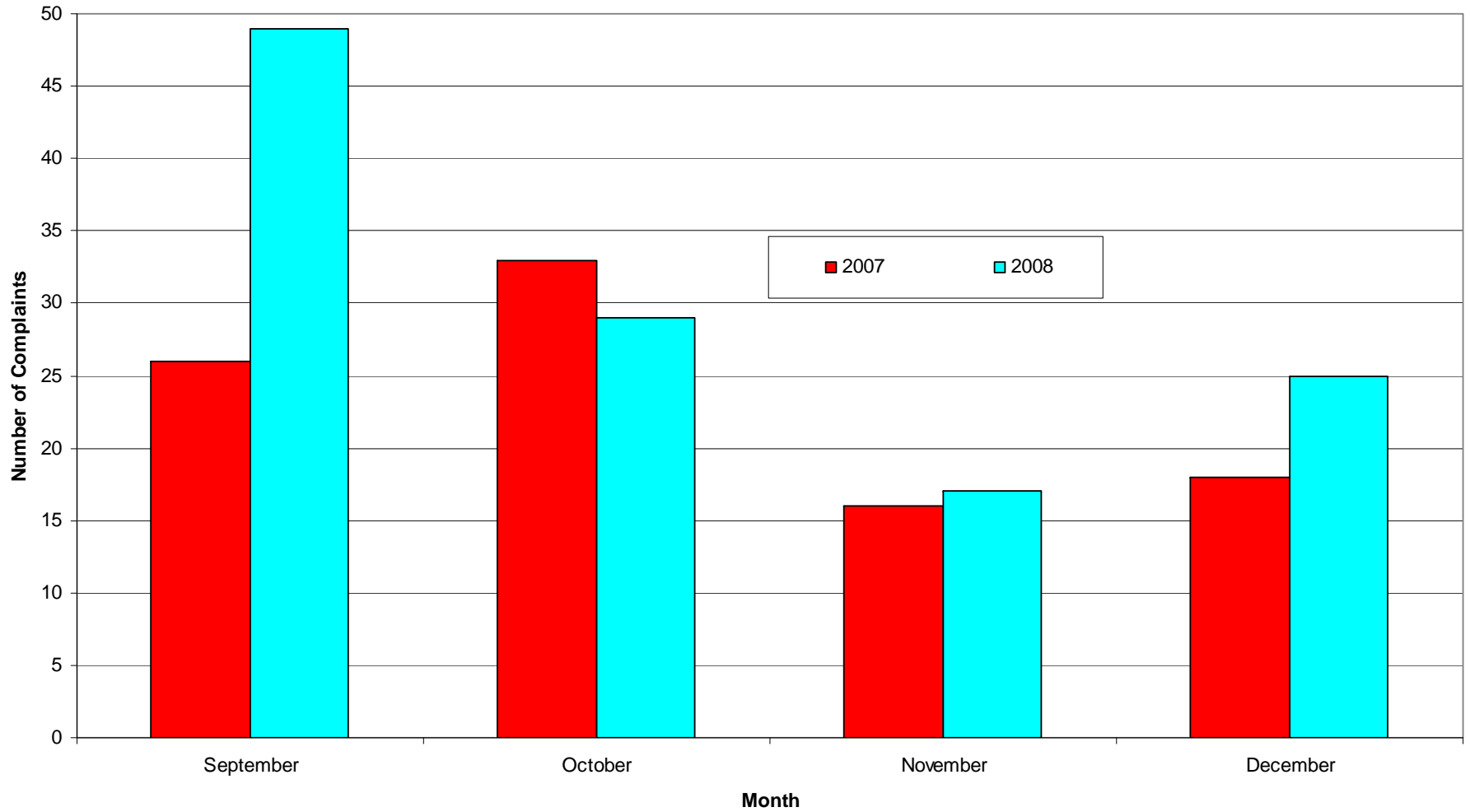
Liverpool John Lennon Airport Complaints and Complainants with Administrative Area for 1st September to 31st December 2008



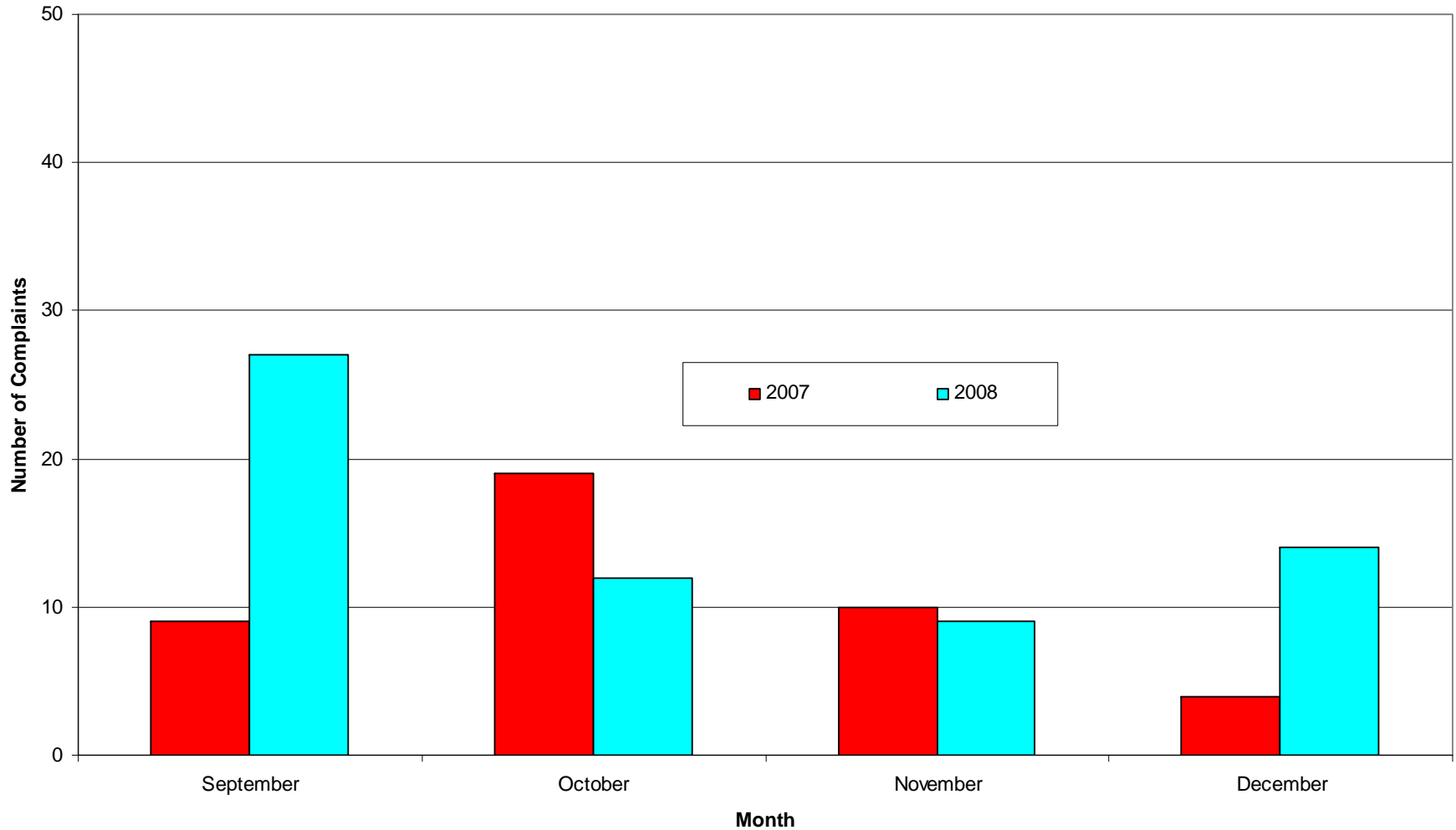
Liverpool John Lennon Airport Complaints and Complainants with Administrative Area for 1st September to 31st December 2008 Without Regular Chester Complainant



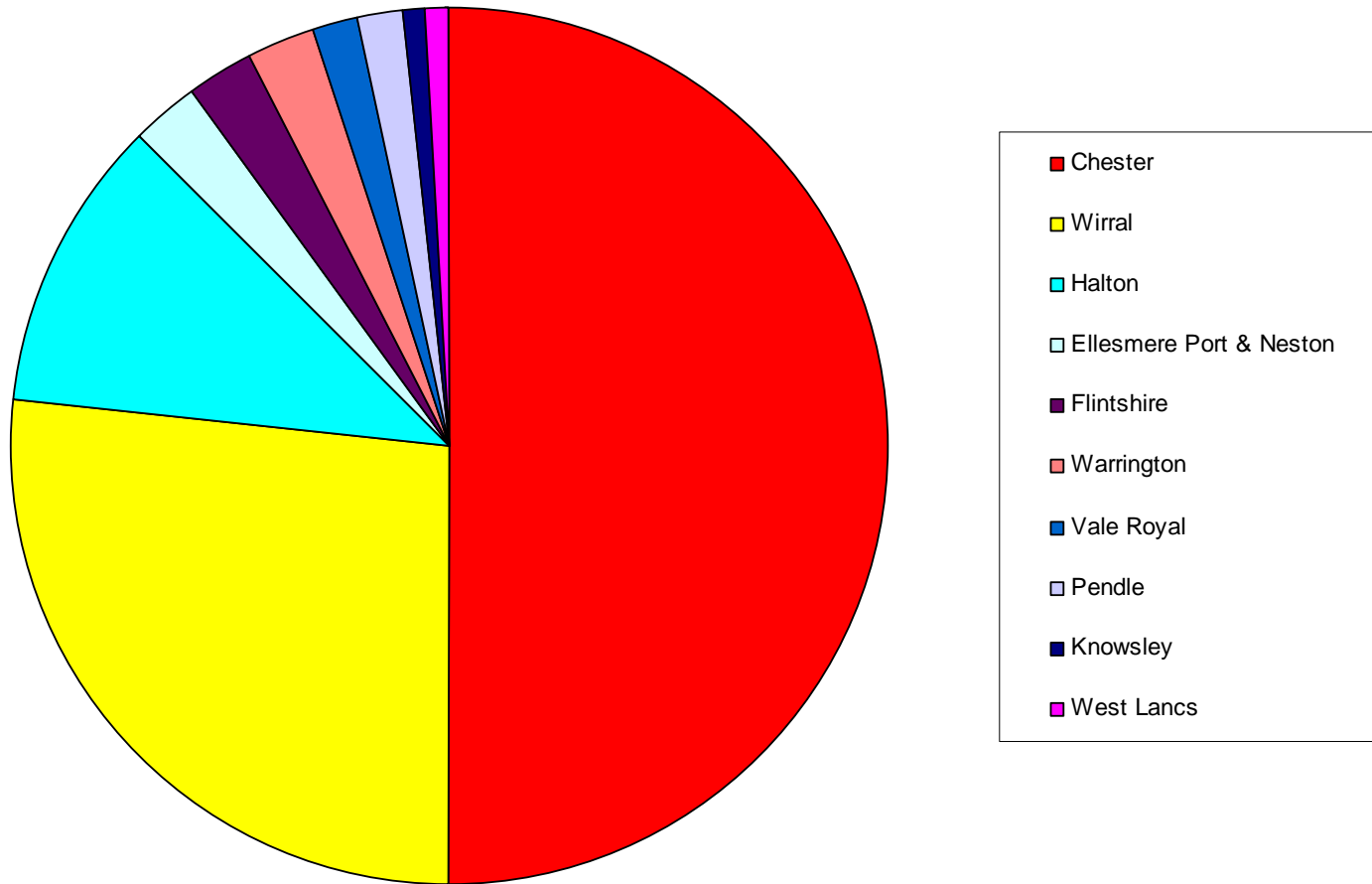
Liverpool John Lennon Airport Complaints Comparison for 1st September to 31st December 2007 / 2008



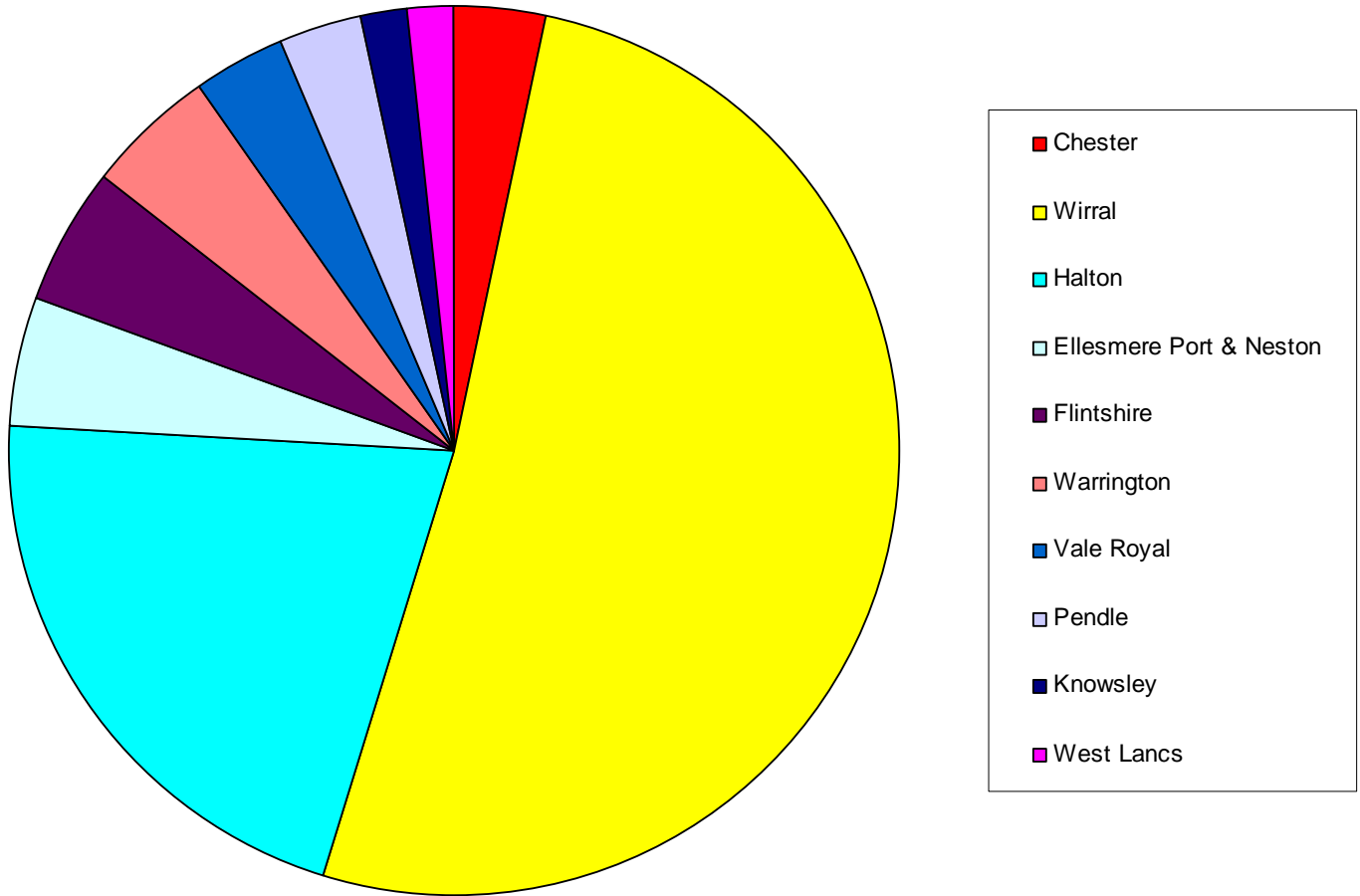
Liverpool John Lennon Airport Complaints Comparison for 1st September to 31st December 2007 / 2008 Without Regular Chester Complainant



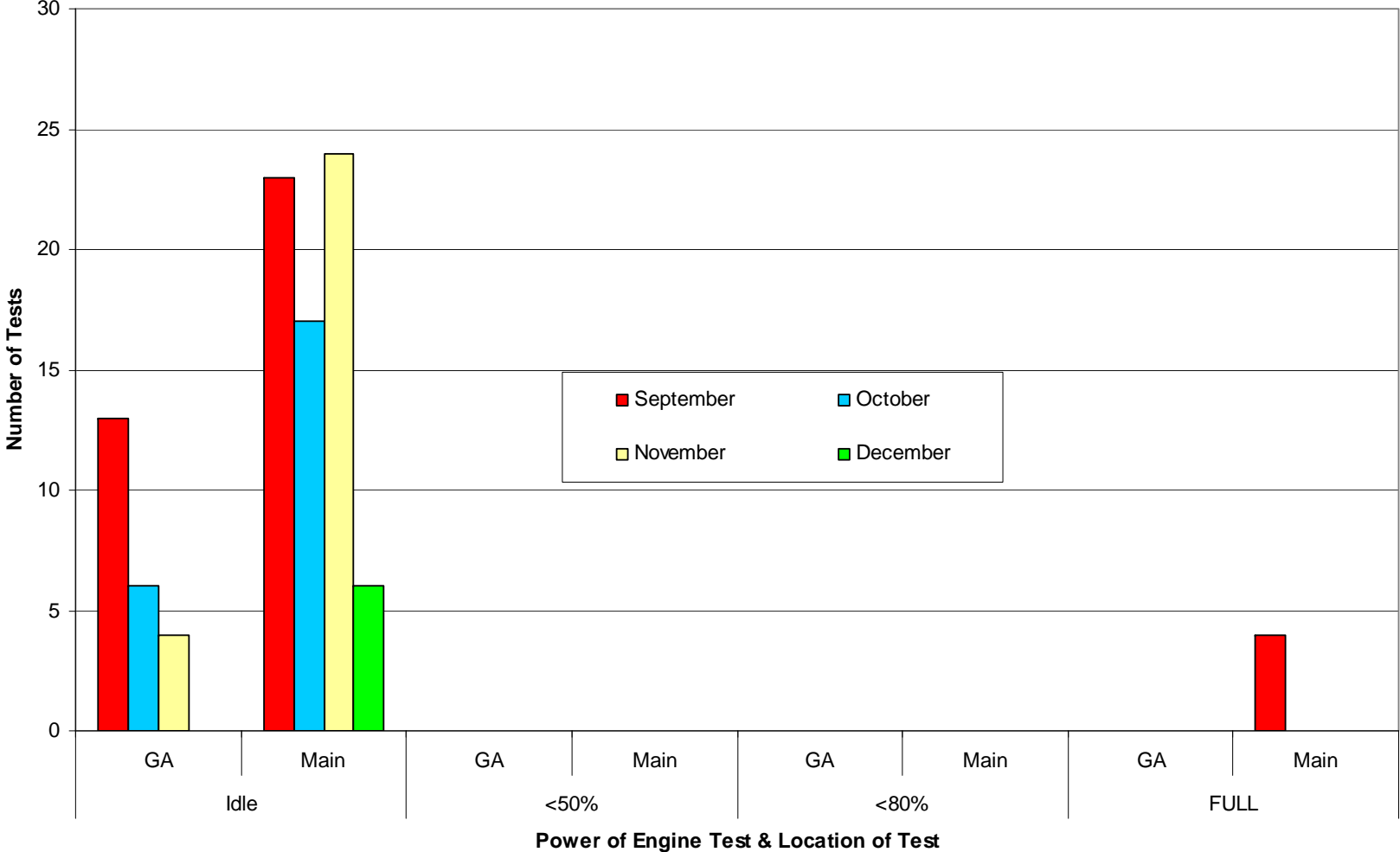
Liverpool John Lennon Airport Percentage of Complaints for Administrative Area 1st September to 31st December 2008



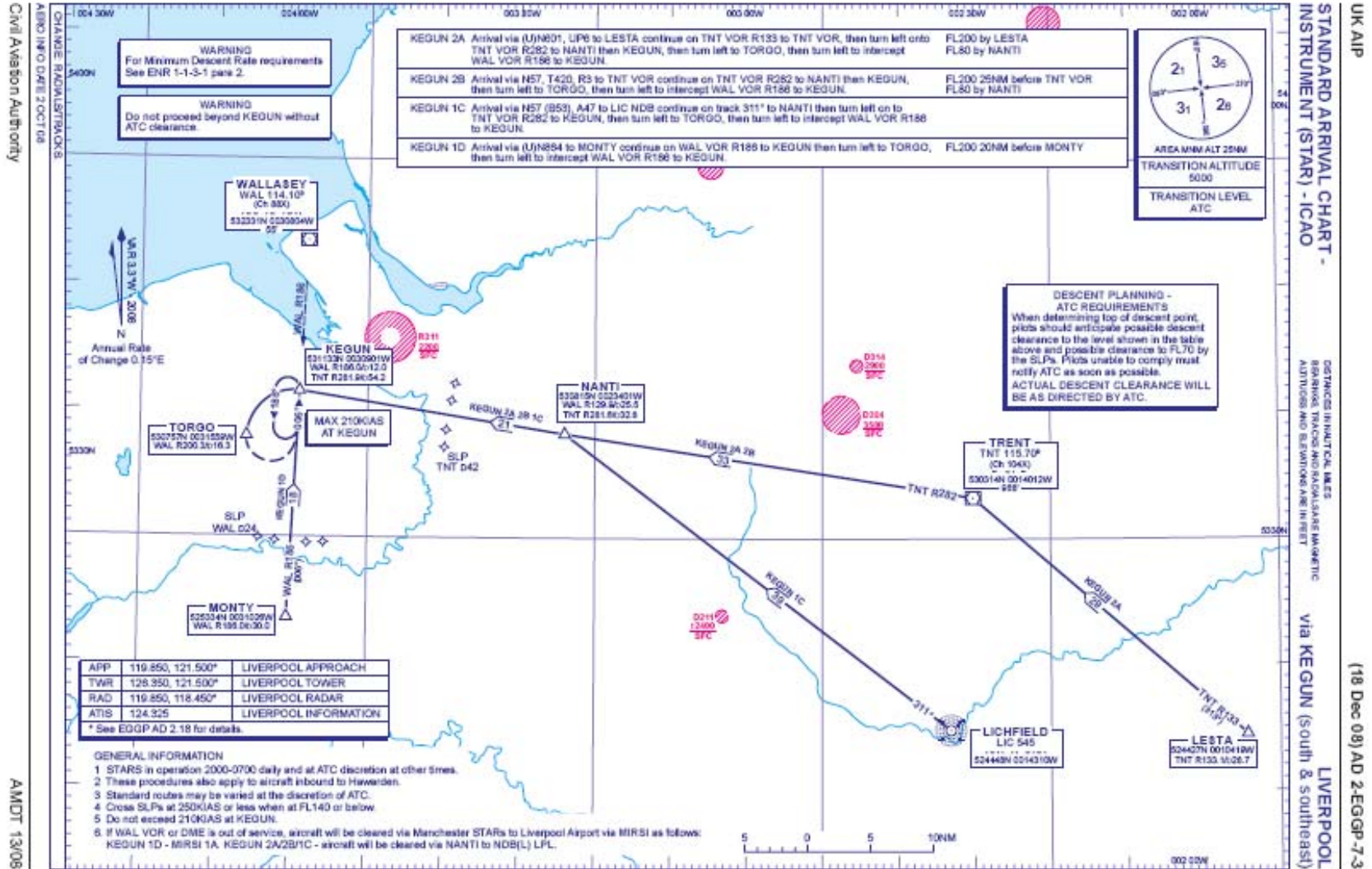
Liverpool John Lennon Airport Percentage of Complaints for Administrative Area Without Regular Chester Complainant for 1st September to 31st December 2008



Aircraft Engine Test Runs For Main Apron 1st September to 31st December 2008



Location of KEGUN Hold



NOISE COMPLAINTS LOG
LIVERPOOL AIRPORT NOISE MONITORING SUB-COMMITTEE: 16th January 2009
04 - Noise Complaint Log September to December 2008.doc

Complainant Area/Address	Date of Incident(s)	Time of Incident(s)	Nature of Complaint	Aircraft Operator	Comment	Action Taken
Collins Green, Warrington	2 September		When we moved here one of the important points was we were not on the flight path. All was well for two years but now we have regular aircraft passing low over Collins Green. This has a detrimental effect when trying to sell our home. We are some distance from the airport so why are so many aircraft flying over the village?		Arrivals on 27.	Letter sent explaining that there have been no changes in either arrival or departure routes over the past two years. A map enclosed showed the arriving aircraft passing over Collins Green come mainly from the west. A second map from 2006 was used to compare. The comparison showed little difference in the numbers of aircraft over the area.
Upton, Chester	3 September		Series of 50 flights at night over the last few weeks up to 00:00. Significant change in previous patterns, could you let me know if there has been a change.		Arrivals on both 09 & 27.	Letter sent explaining that there had been no changes in either arrival or departure routes. A detailed explanation of runway orientation and the arrival routes used by aircraft before they intercept the ILS. Two maps were also sent showing typical days arrivals on both runways. Also detailed the 15 based aircraft and how the evening flights are the aircraft returning for night stop.
Hale Village, Halton	5 September		Like to complain about the aircraft taking off over the village all day!		Departures on 09.	Letter sent showing runway use historically. From 1999 – 2007 runway split has been 09 = 27% and 27 = 73 %. So far in 2008 the split has been 09 = 33 % and 27 = 67 %.
<i>Raby Mere, Wirral</i>	<i>5 September</i>	<i>04.20</i>	<i>For the third time I have been disturbed by aircraft. One sounds like a clapped out old banger of a light aircraft!</i>		<i>Only aircraft was a Manchester arrival at 7200 ft.</i>	<i>Letter sent with a map showing all aircraft around the time of the complaint. Only one movement which was a Manchester arrival several nautical miles south of the location.</i>
Hale Village, Halton	6 September		I would like to know what all these aircraft are coming over the Village. Is there an exhibition on somewhere?	Various RAF	Southport Air show.	Telephone call made explaining that many of the aircraft taking part in displays at the Southport Air show are based at LJLA for the weekend.
<i>Raby Mere, Wirral</i>	<i>8 September</i>	<i>01.45</i>	<i>Just been disturbed by yet another</i>		<i>No aircraft in the</i>	<i>Letter sent with a map showing no aircraft over</i>

Complainant Area/Address	Date of Incident(s)	Time of Incident(s)	Nature of Complaint	Aircraft Operator	Comment	Action Taken
			<i>aircraft, I am going to call every time I get disturbed.</i>		<i>area.</i>	<i>Wirral at that time.</i>
Hale Village, Halton	8 September	23.00	Like to complain about the small jets that are taking off but not landing. They are circling around.	RAF	Two “touch and go” by two individual Hawks.	Letter sent with a map illustrating the tracks of two RAF Hawks which performed “touch and go”. Both aircraft arrived on runway 09 and were 600 ft over Hale Village.
Mold, Flintshire	9 September		Annoyed to see all arriving aircraft 09 & 27 pass over Mold. We have to put up with the noise of every aircraft. Why can't they be routed further west of Mold over countryside? I understand the problems associated with the congested airspace around LPL, MAN & HAW. Surely LPL arrivals could be funnelled in with MAN traffic as neither is that busy compared to Heathrow.			Letter sent in which the opinion of the ATC Managers views were sought. Pointed out not all aircraft arriving pass over Mold (only aircraft from the south). Explained arriving aircraft are directed to KEGUN hold before being radar vectored in to intercept the ILS. A large number of aircraft are also vectored in before they reach the hold. The airspace around the three airports is congested and complex with two independent airports who work closely to achieve the best solutions for airspace use and to reduce environmental impacts.
Runcorn, Halton	10 September	01.00	Complaint about noise of 3 aircraft that all came over in 10 minutes of each other and woke me up.	TNT & easyJet	Arrivals on 27 no SSR data available.	Letter sent identifying the aircraft from AMOSS as TNT 737-300 from Liege & easyJet A319 from Palma.
Roughlee, Pendle	10 September		I thought it prudent to mark the 17 month anniversary since I started to get flights going directly overhead and the most miserable period of our lives. Good news the council has given the green light for a Judicial review of the 2006 law change the government made. We are also forwarding the case to the Human Rights Court. The cost will be 50K so we are selling land. We cannot sleep without sleeping pills. We have had lies for the past 17 months someone should have the integrity to			Email sent stating the complaint has been logged and that LJLA has only ever been open and honest and can only explain there have been no changes to SIDS & STARS since March 07. Any LJLA aircraft that may pass over Roughlee are significantly less than the numbers you are experiencing (300+) we would also consider these to be beyond our sphere of influence in terms of ATC.

Complainant Area/Address	Date of Incident(s)	Time of Incident(s)	Nature of Complaint	Aircraft Operator	Comment	Action Taken
			change back the situation before we go bankrupt. I would appreciate any help but please no more lies!			
<i>Frodsham, Vale Royal</i>	<i>11 September</i>		<i>Once again complaints pouring in from my connections about the low flyers over Frodsham. The majority of aircraft belong to easyJet and our dear "Irish Flyers" – in the latter I can imagine that their head would be going totally bonkers if he lived in Frodsham!</i>			<i>Complaint logged – No further action required.</i>
Oakmere, Vale Royal	13 September	19.42	Complaint about the aircraft that flew over Oakmere, it was very low and loud, I ran out to see what was going on!	Ryanair	Arrival on 27 at 2100 ft.	Letter sent to complainant explaining the aircraft concerned was a Ryanair from Palma at an altitude of 2100 feet, with a map showing the aircraft track. Also enclosed a copy of the CAA's information leaflet "The Rules of the Air".
Hale Village, Halton	14 September	14.30	There is a violent wind from the east, well there must be as I'm complaining about the aircraft taking off over the village all day. I'm not sure if it's an easterly wind or a Wirral wind?		09 departures.	Letter sent showing runway use historically. From 1999 to 2007 runway split was 09 = 27% and 27 = 73 %. So far in 2008 the split has been 09 = 33 % and 27 = 67 %.
Hale Village, Halton	15 September		Complaining about the aircraft taking off over Hale Village. I know there is a ferocious easterly wind or is it a Wirral wind again?		09 departures.	
Upton, Chester	15 September		Are there no agreements to avoid flying over built up areas such as Chester at night? What are the defined STARS over this area?			Letter sent explaining there are no agreements not to fly over built up areas. Aircraft over 1000 ft may pass over such areas. Enclosed a copy of "The Rules of the Air". Explained arriving aircraft from the south are directed to the KEGUN hold over North Wales before being radar vectored in to intercept ILS. A large number of aircraft are also vectored in before

Complainant Area/Address	Date of Incident(s)	Time of Incident(s)	Nature of Complaint	Aircraft Operator	Comment	Action Taken
						they reach the hold. Enclosed the STARS from the UK AIP.
Hale Village, Halton	16 September	06.24	Aircraft taking off over Hale, just want you to register my complaint.		09 departures	Letter sent showing runway use historically. From 1999 to 2007 runway split was 09 = 27% and 27 = 73 %. So far in 2008 the split has been 09 = 33 % and 27 = 67 %.
Hale Village, Halton	17 September	02.00-04.00	Aircraft have been taking off from 02.00 to 04.00. Don't know what you think but I think it is unacceptable!	Monarch & BMI	Departures from 09. Positioning after football flights.	Letter sent which explained that the two aircraft were positioning to bases at Gatwick and Glasgow after returning Liverpool FC fans from Marseille. The aircraft are Ad hoc charter flights and as such LJLA does not normally operate aircraft at that time.
Heswall, Wirral	17 September		Over last 12 months there has been an increase in traffic over Heswall, flights are low and often the under carriage is down. We never had flights over Heswall; I have lived here the majority of my life. This is not just an isolated incident as I have noticed it in other areas of Wirral too!		Arrivals on 09.	Letter sent explaining that there have been no changes to departure or arrival routes at LJLA or the altitude profiles over Heswall. The letter included an explanation of runway orientation with a summary of the ILS. It also explains that the decision to change the runway direction is not taken lightly and is done to ensure the safe and practical operation of the aircraft.
Runcorn, Halton	18 September		What will the NMSC be discussing regarding my complaints. How many aircraft will be coming over at night as I'm not happy with the noise?		Arrivals on 27.	Letter sent explaining the make up of the NMSC and that a log of all complaints is sent to all members. At the meeting a presentation is made showing the number of complaints and the area from which the complainants reside. Letter also shows that in the summer schedule there are a number of aircraft scheduled to arrive between 01.00 and 02.30 depending on the day of the week.
<i>Raby Mere, Wirral</i>	<i>18 September</i>	<i>13.12 18.41 19.34</i>	<i>Bloody aircraft coming over all the time, these are three at random. Had that lot landing last week now we got this lot taking off! We get the worst of both! Tired of your excuses as to</i>	<i>easyJet, Ryanair and RAF Search & Rescue.</i>	<i>Departures from runway 27.</i>	<i>Letter sent with three maps showing the tracks of the three aircraft identified. easyJet to Malaga was at a height of 3800 ft on REXAM SID, Ryanair to Milan was at 4100 ft on NANTI SID. RAF Search & Rescue helicopter was at</i>

Complainant Area/Address	Date of Incident(s)	Time of Incident(s)	Nature of Complaint	Aircraft Operator	Comment	Action Taken
			<i>why they fly over here. You're always on about your NMSC who are just a bloody taking shop who never do anything. Don't think you can just fob me off like everyone else. I can't get a bloody nights sleep because of you lot!</i>			<i>1000 ft departing to RAF Valley.</i>
Heswall, Wirral	19 September	04.00	Already complained about night flights. They could be heard through closed windows, please find an alternative route.		Arrivals on 09.	Letter sent explaining that there have been no changes to departure or arrival routes at LJLA or the altitude profiles over Heswall. The letter included an explanation of runway orientation with a summary of the ILS. Letter also explains the decision to change the runway direction is not taken lightly and is done to ensure the safe and practical operation of the aircraft.
<i>Raby Mere, Wirral</i>	<i>19 September</i>	<i>04.00</i>	<i>Woken up yet again by a hell of a lot of activity. If you don't know what's flying in your own sky God help you but something is!</i>		<i>No Aircraft in the area at the time.</i>	<i>Letter sent with a map showing no aircraft over Wirral at that time.</i>
West Brook, Warrington	21 September	11.43	Like to complain about the aircraft that has just passed over.	Ryanair	Arrivals on 27	Telephone call detailed the Ryanair from Dublin which was at a height of 2100 ft.
Heswall, Wirral	22 September		The volume of traffic today is yet again vast and continuous.		Arrivals on 09	Letter sent explaining that there have been no changes to departure or arrival routes at LJLA or the altitude profiles over Heswall. The letter included an explanation of runway orientation with a summary of the ILS. Letters also explains the decision to change the runway direction is not taken lightly and is done to ensure the safe and practical operation of the aircraft.
Hale Village, Halton	24 September	06.55- 07.20	Complaining about the aircraft taking off over the village, no wind, clouds are not moving, its nonsense. How southerly does the easterly wind have to be! Hope you slept well! Just watched local weather telling me the		Departures on 09	Letter sent with details of the winds at higher altitudes which also affect aircraft on approach and departure. Orientation of Manchester's runway can also have an effect on the decision to change the orientation of the runway at LJLA.

Complainant Area/Address	Date of Incident(s)	Time of Incident(s)	Nature of Complaint	Aircraft Operator	Comment	Action Taken
			wind is from the northwest! I'm going to do some independent research.			
Heswall, Wirral	25 September		Yet again noise from aircraft is considerable. I have now emailed several times but when I have not it is not that there are no flights; it is because I have had difficulty emailing. I was at the Hospice in Clatterbridge and three flights went over, disturbed sleep is an issue. When will you address this problem?		Arrivals on 09	Letter sent explaining that Heswall is inline with and 8 nautical miles from the runway so it would not be practical to divert aircraft away from Heswall.
<i>Raby Mere, Wirral</i>	<i>28 September</i>	<i>14.00</i>	<i>Just watched one appear from nowhere. It then made a wide turn. Its Sunday afternoon, its not peak time!</i>	<i>Ryanair</i>	<i>Departure from 27.</i>	<i>Letter sent with map showing the Ryanair departure to Budapest originally departed for the DESIG SID. The aircraft turned north then turned south as a Manchester arrival was in the MIRSI hold at a similar altitude. The Ryanair was diverted south of the airfield before turning east.</i>
Roughlee, Pendle	29 September		I would like to state I do not think I have been misled I have simply been lied to! I am not making a statement against Liverpool but I have not been told the truth by the aviation industry and government departments as a whole. I am not a nutter just a hard working person who saved for 30 years to purchase a dream home which, over the last 18 months has been smashed to pieces. Dogs receive better treatment than my family has received over the last 18 months.			Email sent confirming receipt of the complaint and it will be logged.
Neston, Ellesmere Port & Neston	3 October		Complaint of increased excessive aircraft noise and low flight			Letter sent explaining the runway orientation with a summary of the ILS, SIDS and STARS.

Complainant Area/Address	Date of Incident(s)	Time of Incident(s)	Nature of Complaint	Aircraft Operator	Comment	Action Taken
			approaches. It seems this year a significant increase in the number of aircraft over Neston. Many departures early over Neston and significant amount of approaches at approximately 1000 ft. Please respond with the reason for the increased low arrival flights over Neston and increased departures over Neston. Could you propose what measures you will be taking to avoid these flights in the early morning and late at night to avoid disturbing the local population?			Wrote that there are no agreements not to fly over built up areas in the morning or at night. Aircraft over 1000 ft may pass over such areas. Enclosed a copy of "The Rules of the Air". Explained arriving aircraft are directed to KEGUN hold before being radar vectored in to intercept ILS. A large number of aircraft are also vectored in before they reach the hold. There has been no significant change in the number of arrivals and departures over Neston. Explained that there are 15 based aircraft which depart early morning and arrive back at LJLA for night stop late at night.
Heswall, Wirral	5 October		Noise has only appeared over the last two years. This area previously had no low flying aircraft yet now it has almost gradually been foisted on us without consultation. This should have been done before the new runways or the beacons at Wallasey were put in place.		Arrivals on 09.	Letter sent explaining the current runway has been in use since 1966 and that historically a large proportion of aircraft arriving on runway 09 will have passed over Heswall; there is no reason for a perceived sudden appearance of aircraft over the last two years. The Wallasey VOR-DME beacon has been in place since at least 1964.
Runcorn, Halton	5 October		MP on behalf of Constituent. Constituent's home lies directly under the flight path from the east and suffers constant noise and vibration. He has asked if it possible to monitor noise in his bedroom and living room. In 2006 Halton BC asked if the airport would consider offering the SIGS to a wider number of affected properties.		Arrivals on 27.	Letter sent to the MP explaining that the Airport monitored noise in the constituent's garden in 2006. The mobile NMT is designed to be used outdoors and is not suitable for indoor use as it would be difficult to distinguish aircraft noise from the everyday noise environment in a family home. The SIGS is available for properties that currently fall within a geographical area exposed to 62 dB LAeq, t=24hrs. Unfortunately the constituent property is not currently eligible under the existing scheme.
Heswall, Wirral	6 October		Last night I thought the aircraft were going to land in the garden.		Arrival on 09.	Letter sent explaining the use of the NM&TKS as a powerful analytical tool which produced

Complainant Area/Address	Date of Incident(s)	Time of Incident(s)	Nature of Complaint	Aircraft Operator	Comment	Action Taken
			Wondered if the people who direct the aircraft have an issue with Heswall. We have managed to acquire video footage if that would help.			maps the complainant has previously received. With this system the offer of the video footage is not required.
Halsall, West Lancs.	6 October	13.00	My light aircraft problem is getting worse. At the start of the year you identified an aircraft as been GVARW, this aircraft passed over low again today. It is registered to Lomac Aviation and based at JLA. Could you please tell me how high it was over Halsall.	Lomac Aviation		Letter sent showing a map of the identified aircraft was at a height of 1500 ft as it passed over Halsall.
Widnes, Halton	7 October		Over the past three years we have noticed an increase in budget aircraft, which ought to fly around eight towers are shortcutting across residential areas. We notice them as the other aircraft fly over the fields.		Arrivals on 27.	Letter sent explaining that arriving aircraft for runway 27 will be directed to one of two holds (TIPOD or KEGUN) and due to the current capacity most aircraft will be radar vectored to intercept the ILS before reaching the holds. Aircraft from the North West will fly to the east of Widnes before tuning to line up with the runway. Some aircraft for operational reasons will turn closer to the airport. There is no requirement for aircraft to fly to the east of Fiddlers Ferry. Two maps enclosed compared summer days in 2008 and 2005. They showed no discernable difference in the number of aircraft passing over Widnes.
Oxton, Wirral	12 October	13.14 13.51	Sitting in my garden and a huge big aircraft came over then a helicopter then a light aircraft. I do not live by an airport! Yet another huge commercial jet flew over my house I could almost touch it! I don't live near an airport and I don't use an airport. I don't see	Ryanair,	Two Ryanair departures on WALL SID. One Woodvale aircraft and a Manchester departure.	Letter sent with maps showing Ryanair departures to Shannon at 4700 ft and Derry at 5800 ft both on a WALL SID. An aircraft from RAF Woodvale passed over at 1400 ft and Manchester departure at 9800 ft. Explained the Wallasey beacon is used by a large number of aircraft navigating to Ireland and Continental America.

Complainant Area/Address	Date of Incident(s)	Time of Incident(s)	Nature of Complaint	Aircraft Operator	Comment	Action Taken
			why your business should impinge on my leisure time. Send them somewhere else as this is ridiculous. If not I will go further.			
Heswall, Wirral	17 October		This has been a really noisy week, phenomenal noise practically in the morning and at night. They are so low you can see the wheels. Why is it that Heswall gets so many flights but Caldy gets so few? Please re route a little more discriminately and ask the pilots not to fly so low.		Arrival on 09	Letter sent reiterating that Heswall is 78 nautical miles from and in line with runway 09. A large number of aircraft will be arriving from the South will pass over Heswall but not over Caldy which is north of Heswall. Aircraft from Ireland and Isle of Man will regularly pass over or just to the west of Caldy.
West brook, Warrington	21 October	12.00 12.15	Like to complain about two aircraft that passed over.	easyJet	Arrivals on 27	Letter sent with maps of the two easyjet aircraft that arrived on runway 27. First A319 arrived from Belfast was at 2100 ft and the second from Barcelona was at 2700 ft.
West Kirby, Wirral	23 October	11.00 – 13.00	Most of the morning a small light aircraft has been flying over the area in a very unsatisfactory manner. I think I should be responded too within a week and in future within the day!		RAF Woodvale	Telephone call in which contact was made with Station Officer Huxley who took the complainants details and will contact direct.
<i>Raby Mere, Wirral</i>	<i>31 October</i>	<i>04.00 – 06.00</i>	<i>Jets have roared over since 4am. Manchester says its nothing to do with them, you say it's nothing to do with you, someone must know out of the two of you! Don't you have radar that covers these aircraft?</i>	<i>TNT</i>	<i>Arrival on 09 and 2x Manchester arrivals</i>	<i>Letter sent with maps showing TNT BAe146 arriving on runway 09 from Liege at 05.20. The aircraft was at 2300 ft over Raby Mere. Only other aircraft in the time window were two Manchester arrivals at 9500 ft and 7300ft. Explained that the NM&TKS at LJLA only has information identifying LJLA flights. With other aircraft the only identity we have is the SSR code. The SSR radar also only covers aircraft up to 25,000 feet.</i>
Heswall, Wirral	31 October	22.00	Been a lot of aircraft all week. Just now one went over and despite TV and double glazing the noise was	easyJet	Arrivals on 09.	Letter sent with map showing the easyJet identified which arrived on runway 09 from Belfast. The A319 was at a height of 2800 ft

Complainant Area/Address	Date of Incident(s)	Time of Incident(s)	Nature of Complaint	Aircraft Operator	Comment	Action Taken
			incredible. There have been many mornings when aircraft have come over at 04.00. Who makes the decisions regarding height and when to drop the landing gear as this must make the aircraft louder?			over Heswall. Explanation and schematic of the 3 degree glide slope included to explain the heights of the aircraft. Also explained that aircraft making a full ILS approach will normally lower the landing gear at 2000 ft or at 6 Nautical miles from the runway. When approaching runway 09 the aircraft have less controlled airspace within which to manoeuvre and often aircraft are slightly higher than required to intercept the glide slope. Landing gear can be deployed to help increase the rate of descent; these procedures are only used to maintain the safe arrival of the aircraft.
<i>Raby Mere, Wirral</i>	<i>1 November</i>	<i>05.00 05.46 05.49 05.57 06.26 07.03 07.22</i>	<i>Disturbed yet again by a whole load of aircraft some are in the distance some seem to be departing.</i>	<i>TNT</i>	<i>1 arrival on 09, 3 Manchester arrivals, 3 no aircraft at the time.</i>	<i>Letter sent with seven maps showing TNT arrival on 09 at 05.07 which was a BAe146. The TNT aircraft was at 2300 ft. 3 Manchester arrivals at 05.44 (6500ft), 05.48 (6300ft) and 05.55 (6300ft). At the later times there were no aircraft over Wirral as LJLA had switched to runway 27.</i>
Flint, Flintshire	2 November	21.03 23.03	Low flying aircraft noise.	Ryanair & easyJet	Arrivals on 09.	Letter sent with maps showing the tracks of Ryanair arrival from Murcia which was 4400 ft over Flint and easyJet flight from Alicante which was at 3800 ft over Flint.
<i>Raby Mere, Wirral</i>	<i>3 November</i>	<i>03.00</i>	<i>Just been woken by aircraft flying over here despite the fact I am taking sleeping tablets!</i>	<i>easyJet</i>	<i>Arrival on 09.</i>	<i>Letter sent with a map showing the track of easyJet arrival from Malaga. The A319 was 2000 ft over Raby Mere at 02.57.</i>
Hale Village, Halton	3 November	06.35	Complaining about the aircraft taking off over Hale Village, especially the one at 0630. Please record my complaint.	Private Operator	Departure on 09.	Letter sent with map showing the Gulf stream 3 jet N163PA which departed runway 09 to Bangor. The aircraft was at 600 ft over Hale Village.
Heswall, Wirral	3 November	22.00	Aircraft just come over very low and loud.	easyJet	Arrival on 09	Letter sent to complainant with a map showing the track of the A319 over Heswall. The arrival from Belfast was at 2800 ft. The easyJet was making its final turn before lining up with

Complainant Area/Address	Date of Incident(s)	Time of Incident(s)	Nature of Complaint	Aircraft Operator	Comment	Action Taken
						runway 09 ILS.
Poulton, Wirral	5 November	02.25	In the past 40 minutes seven aircraft have passed over at a low height and at a very high volume. I thought that no flights were allowed after 23.30? What is going on?	Privilege, Pronair, Air Europa, Iberworld, & Swift Air	11 departures on 27 for REXAM and NANTI SIDs.	Letter sent with one map showing the tracks of the 11 aircraft over Wirral. Letter listed all the aircraft that departed back to Spain after collecting Atletico Madrid fans after their UEFA CL game with Liverpool FC. The flights were Ad hoc charter flights and LJLA does not usually have this number of departures at night. LJLA has been a 24hr operation since 1966. Over the past seven years there has been a large reduction in the number of night time flights.
Thornton Hough, Wirral	5 November	01.30 – 02.30	I was woken up by 5 or 6 aircraft coming over my house. I understand aircraft occasionally fall behind schedule but it seems strange so many were affected. What safeguards are in place to stop this happening again?	Privilege, Pronair, Air Europa, Iberworld, & Swift Air	09 departures on 27 for REXAM SID.	Letter sent with one map showing the tracks of the 9 aircraft over Wirral on the REXAM SID. The letter also listed all the aircraft that departed back to Spain after collecting Atletico Madrid fans after their UEFA CL game with Liverpool FC. The flights were Ad hoc charter flights for the game and LJLA does not usually have this number of departures at night. LJLA has been a 24hr operation since 1966 although over the past seven years there has been a large reduction in the number of night time flights.
Parkgate, Wirral	17 November	15.50	I am more than concerned about the amount of aircraft which travel over my property which I understood was to be none at all. At the stated time an aircraft came over very low.	Ryanair	Arrival on 09.	Letter sent with a map showing the track of the Ryanair arrival from Limoges. The Boeing 7.7-800 was at a height of 2700 ft over Parkgate. It also gave a detailed explanation of runway orientation and the arrival routes. Explained that there are no requirements for aircraft to avoid flying over Parkgate and that there had been no change in the arrival or departure route at LJLA.
Heswall, Wirral	26 November		Noise picked up over the weekend, felt like the aircraft were landing in the garden. As this is the highest point on Wirral why is it part the regular traffic route? Please could		Arrivals on 09.	Letter sent explaining that Poll Hill in Heswall is 1.5km north of and 8 nautical miles from the extended centre line for runway 09. It would not be practical to avoid over flying the area. Aircraft over Heswall are typically over 2000 ft

Complainant Area/Address	Date of Incident(s)	Time of Incident(s)	Nature of Complaint	Aircraft Operator	Comment	Action Taken
			you consider re routing the aircraft.			above sea level with Poll Hill being 350 ft above sea level therefore any aircraft will be at least 1650 over Poll Hill. Enclosed a copy of the "Rules of the Air".
Heswall, Wirral	1 December		Noise over the weekend was dreadful. It started 4am Friday. Today from 00.30 it has been continuous. Please review your system of flights over Poll Hill. I was awoken again this morning; I would think we lived by Heathrow!	easyJet	Arrivals on 09 and easyJet arrival on 09.	Letter sent with maps showing all movements on the Friday morning showed no aircraft that were associated with LJLA. At the times given only one flight was associated with LJLA which was an easyJet arriving from Malaga at 01.15 on 1.12.08. It was at a height of 3100 ft. Letter also showed the difference in air traffic movements at LJLA and Heathrow in 2007.
Heswall, Wirral	12 December	22.00	Another 3 aircraft just disturbed me, please look for an alternative route.	easyJet & Ryanair	Arrivals on 09	Letter sent with maps and details of the three arrivals on 09. easyJet's from Amsterdam and Krakow both at 3400 ft and a Ryanair from Osl9o at 3400 ft.
<i>Raby Mere, Wirral</i>	<i>14 December</i>	<i>12.20</i>	<i>Some noisy aircraft just come over proceeded by some clapped out light aircraft. There is an increasing number of these light aircraft. More and more people are buying them and making a nuisance of them selves.</i>	<i>Ryanair</i>	<i>Arrival on 09.</i>	<i>Letter sent with map identifying the aircraft as Ryanair arrival from Rome. The B738 was at a height of 2400 ft over Raby Mere. No tracks of any light aircraft at the time given could be found.</i>
Heswall, Wirral	15 December		Bad weekend again, there were 6 flights over a short period of time and the noise was great. It felt very invasive. There must be other areas of Wirral that could be used not just Heswall.		Arrivals on 09	Letter sent listing all arrivals on 09 over the weekend 13-15. Explained that the decision to use runway 09 is not taken lightly as it involves complex air traffic management decisions.
Heswall, Wirral	16 December	22.00-23.00	Disturbed by 6 flights from 22.00 to 23.00. Unable to go to sleep due to the noise, felt flights were on top of one another.		Arrivals on 09.	Letter sent listing all 8 arrivals on 09 from 22.00 – 23.00. Explained that the decision to use runway 09 is not taken lightly as it involves complex air traffic management decisions.
<i>Raby Mere, Wirral</i>	<i>17 December</i>	<i>15.00</i>	<i>A clapped out old banger of a light aircraft has just passed over here.</i>	<i>Private Operator</i>	<i>Arrival on 09.</i>	<i>Letter sent with a map showing private operator flight PVTGRVRL which arrived on 09 from</i>

Complainant Area/Address	Date of Incident(s)	Time of Incident(s)	Nature of Complaint	Aircraft Operator	Comment	Action Taken
			<i>Have we not got enough trouble with commercial jets without these private light aircraft floating around making a nuisance of them selves?</i>			<i>Blackpool. The P38 was at a height of 1700 ft as it passed over Raby Mere.</i>
Mold, Flintshire	19 December	13.04	Aircraft flying far too low over my house. There is surely no need for it to be flying that low over Mold?	easyJet	Arrival on 27.	Letter and map sent showing that the easyJet A319 was at 4500 ft over Mold before being radar vectored east to intercept the 27 localiser. The height of the aircraft was similar to other aircraft arriving over Mold on the same day.
Heswall, Wirral	26 December		There has been a number of low flying aircraft today which have produced noise that could be heard with the windows closed and the TV on, it is very disruptive to the peace of the day.		Arrivals on 09.	Letter sent with a map showing there were 46 arrivals on runway 09, also listed the aircraft that passed over Poll Hill area of Heswall.
Heswall, Wirral	28 December		There has been a great deal of low flying aircraft again today from 8am throughout the day it has spoiled another beautiful winters day, the noise being heard despite closed doors and windows. This raises concerns for the summer, hotter weather when the need to open windows doors will be necessary. We sometimes have quiet spells but this is getting less often. Had this been noticeable when we moved home here from Irby less than 3 miles away where we rarely saw never mind heard aircraft to Heswall where it has now become a common intrusion When we first moved her yes we would see the white trails across the sky but never the actual aircraft. A very distressing intrusion.		Arrivals on 09.	Letter sent explaining that more aircraft will pass over Heswall than Irby as Heswall is directly in line with the extended centre line of runway 09. Irby will have aircraft passing over from the north east and north west. On the particular day in question 6 arrivals passed directly over Irby and then the Poll Hill area of Heswall. Heswall on the whole also receives aircraft from the south west and south east as well as the aircraft from the north. Over the last week there has been a prolonged period of easterly winds which meant runway 09 was selected.

Complainant Area/Address	Date of Incident(s)	Time of Incident(s)	Nature of Complaint	Aircraft Operator	Comment	Action Taken
Ellesmere Port, Ellesmere Post & Neston	29 December	1500	I was looking out of my window in Joseph Groom Towers towards Cheshire Oaks when a light aircraft came towards the tower. It then turned and passed over by about 100 ft. This caused a bit of concern in the tower.	Private Operator	Arrival on 09.	Telephone call made explaining the P34 G-JMOS from Blackbushe was at a height of 700 ft as it passed the tower block which is 150 ft tall. The aircraft also passed 1 km south east of the building.
Knowsley, Knowsley	29 December	15.00	There is a free flying helicopter in the area; it's not the police as I have checked. Almost as if it's doing a display as it's flying erratically really low. It is banking and climbing sharply. In my opinion if there was something to fail the helicopter would come down on a housing estate.	Merseyside Police Air Support Unit.		Telephone call made in which the complainant acknowledged he had later found out that it was Merseyside Police who were chasing off road motorbikes.
Heswall, Wirral	29 December	22.00 – 23.20	At about 10pm as I retired for bed the aircraft became extremely low. Although needing to sleep as I was at work the next day I was too disturbed by a number of flights. I did not keep a record until 11.20 of which this was the last one and I was able to go to sleep.	Ryanair & easyjet	6 Arrivals on 09	Letter sent with maps and details of the 6 arrivals on runway 09. Ryanair flights from Oslo (2800ft) & Alicante (2500 ft). easyJet flights from Geneva (1800ft), Malaga (3000 ft), Paris (2000 ft) and Barcelona (2300 ft). All the aircraft were returning from their final sectors before night stopping at LJLA.
Thornton Hough, Wirral	29 December		I would like to talk to someone about helicopter noise over Thornton Hough.			Telephone call made in which the complainant asked if there have been any changes in the route helicopters are to take over Wirral. Complainant will monitor and log any helicopter movements so we can ascertain the origin of the movements.
Heswall, Wirral	30 December	16.10	An aeroplane has just flown across extremely low, as if it wished to land here. My friends who live on the Deeside of Wirral are always shocked by the low level of the	Ryanair	Arrival on 09.	Letter sent with two maps. First map and letter have details of the Ryanair arrival from Knock which was at 3200 ft over Poll Hill area of Heswall. Letter also explains that we do receive complaints from other areas of Wirral especially

Complainant Area/Address	Date of Incident(s)	Time of Incident(s)	Nature of Complaint	Aircraft Operator	Comment	Action Taken
			flights and deny they see this as frequently if at all in other areas of Wirral. Of course Eastham and Bromborough complain as avidly as I do.			the Eastham and Bromborough area. The second map enclosed showed a full days operations. It can be seen that most parts of Wirral have aircraft passing over to some extent at varying heights. As the areas from Eastham to Heswall lie directly under the arrival path for runway 09 these areas will experience more aircraft than other areas.
<i>Dunham-on-the-Hill, Chester</i>	<i>1 September</i>	<i>2305 2310</i>	<i>I would like to complain about noise at 2305 2310</i>	<i>Ryanair</i>	<i>2 Arrivals on 27 at 3400 ft</i>	
<i>Dunham-on-the-Hill, Chester</i>	<i>2 September</i>	<i>1735 1915 1927</i>	<i>I would like to complain about noise at 1735 1915 1927</i>	<i>easyJet</i>	<i>3 Arrivals on 27 all above 2800 ft</i>	
<i>Dunham-on-the-Hill, Chester</i>	<i>4 September</i>	<i>1820 1825 1845 1915 2315</i>	<i>I would like to complain about noise at 1820 1825 1845 1915 2315</i>	<i>Ryanair & easyJet</i>	<i>2 Nanti departures on 27 all above 7200 ft & 3 arrivals on 27 all above 3000 ft</i>	
<i>Dunham-on-the-Hill, Chester</i>	<i>7 September</i>	<i>0745 0750 1120 1215 1335 2320 2327</i>	<i>I would like to complain about noise at 0745 0750 1120 1215 1335 2320 2327</i>	<i>Ryanair & easyJet</i>	<i>3 Nanti departures on 27 all above 4600 ft & 4 arrivals on 27 all above 2700 ft</i>	
<i>Dunham-on-the-Hill, Chester</i>	<i>8 September</i>	<i>1720 2205</i>	<i>I would like to complain about noise at 1720 2205</i>	<i>Ryanair & easyJet</i>	<i>1 Nanti departure on 27 at 4900ft & 1 arrival on 27 at 2500ft</i>	
<i>Dunham-on-the-Hill, Chester</i>	<i>12 September</i>	<i>2155</i>	<i>I would like to complain about noise at 2155</i>	<i>Ryanair</i>	<i>Arrival on 27 at 3100ft</i>	
<i>Dunham-on-the-Hill, Chester</i>	<i>13 September</i>	<i>0850 0915 0917 1300 1910 2055</i>	<i>I would like to complain about noise at 0850 0915 0917 1300 1910 2055</i>	<i>Ryanair & easyJet</i>	<i>3 Nanti departures on 27 all above 6900 ft</i>	

Complainant Area/Address	Date of Incident(s)	Time of Incident(s)	Nature of Complaint	Aircraft Operator	Comment	Action Taken
					<i>& 3 arrivals on 27 all above 2600 ft</i>	
<i>Dunham-on-the-Hill, Chester</i>	<i>15 September</i>	<i>0125 2356</i>	<i>I would like to complain about noise at 0125 2356</i>	<i>TNT & Manchester arrival</i>	<i>1 Nanti departure on 09 at 3400 ft & 1 Manchester arrival</i>	
<i>Dunham-on-the-Hill, Chester</i>	<i>16 September</i>	<i>0145</i>	<i>I would like to complain about noise at 0145</i>	<i>TNT</i>	<i>1 Nanti departure on 09 at 5200 ft</i>	
<i>Dunham-on-the-Hill, Chester</i>	<i>17 September</i>	<i>0614 0638 0642 0652 2230</i>	<i>I would like to complain about noise at 0614 0638 0642 0652 2230</i>	<i>TNT, Ryanair & Manchester arrival</i>	<i>4 Nanti departures on 09 all above 4000 ft & 1 Manchester arrival</i>	
<i>Dunham-on-the-Hill, Chester</i>	<i>18 September</i>	<i>1845 1912 2245</i>	<i>I would like to complain about noise at 1845 1912 2245</i>	<i>Ryanair & easyJet</i>	<i>1 Nanti departure on 27 at 8500 ft & 2 arrivals on 27 all over 2400 ft</i>	
<i>Dunham-on-the-Hill, Chester</i>	<i>19 September</i>	<i>2230</i>	<i>I would like to complain about noise at 2230</i>	<i>Ryanair & easyJet</i>	<i>Arrival on 27 at 2400 ft</i>	
<i>Dunham-on-the-Hill, Chester</i>	<i>20 September</i>	<i>0830 0850 1030 1310 1516 1536 1810 1836</i>	<i>I would like to complain about noise at 0830 0850 1030 1310 1516 1536 1810 1836</i>	<i>Thomson fly, Ryanair & easyJet</i>	<i>3 Nanti departures on 27 all over 5700 ft & 5 arrivals on 27 all over 2400 ft</i>	
<i>Dunham-on-the-Hill, Chester</i>	<i>21 September</i>	<i>0955 1300 1316 1948 2232 2355</i>	<i>I would like to complain about noise at 0955 1300 1316 1948 2232 2355</i>	<i>Ryanair & easyJet & 2 no aircraft in the area</i>	<i>1 Nanti departure on 27 at 5200ft & 3 arrivals on 27 all over 2400 ft</i>	
<i>Dunham-on-the-Hill,</i>	<i>22 September</i>	<i>0620 1710</i>	<i>I would like to complain about noise</i>	<i>Ryanair , easyJet</i>	<i>5 Nanti</i>	

Complainant Area/Address	Date of Incident(s)	Time of Incident(s)	Nature of Complaint	Aircraft Operator	Comment	Action Taken
<i>Chester</i>		<i>1720 1810 1940 1955</i>	<i>at 0620 1710 1720 1810 1940 1955</i>	<i>& 1 Manchester arrival</i>	<i>departures on 27 all above 3500ft</i>	
<i>Dunham-on-the-Hill, Chester</i>	<i>23 September</i>	<i>1840 1910</i>	<i>I would like to complain about noise at 1840 1910</i>	<i>Ryanair & easyJet</i>	<i>2 Nanti departures on 27 both at 3000ft</i>	
<i>Dunham-on-the-Hill, Chester</i>	<i>24 September</i>	<i>0635 0640 1630 1815 1835 1840 1945 2240</i>	<i>I would like to complain about noise at 0635 0640 1630 1815 1835 1840 1945 2240</i>	<i>TNT, Ryanair & easyJet</i>	<i>8 Nanti departures on 09 all above 2900 ft</i>	
<i>Dunham-on-the-Hill, Chester</i>	<i>25 September</i>	<i>1750 1810 1840 1848 1855 1905 2207</i>	<i>I would like to complain about noise at 1750 1810 1840 1848 1855 1905 2207</i>	<i>Ryanair & easyJet</i>	<i>7 Nanti departures on 09 all above 3300 ft</i>	
<i>Dunham-on-the-Hill, Chester</i>	<i>27 September</i>	<i>1220 1225 1235 1248 1712 1748 1825 1900 2012 2215</i>	<i>I would like to complain about noise at 1220 1225 1235 1248 1712 1748 1825 1900 2012 2215</i>	<i>Ryanair & easyJet</i>	<i>1 Nanti departure on 27 at 6200ft & 9 arrivals on 27 all over 2100 ft</i>	
<i>Dunham-on-the-Hill, Chester</i>	<i>28 September</i>	<i>0900 0949 1740 1745 1830 2304 2311</i>	<i>I would like to complain about noise at 0900 0949 1740 1745 1830 2304 2311</i>	<i>easyJet & Ryanair</i>	<i>5 Nanti departures on 27 all above 5400 ft & 2 arrivals on 27 both over 2900 ft</i>	
<i>Dunham-on-the-Hill, Chester</i>	<i>29 September</i>	<i>2315</i>	<i>I would like to complain about noise at 2315</i>	<i>Ryanair</i>	<i>Arrival on 27 at 2900 ft</i>	
<i>Dunham-on-the-Hill, Chester</i>	<i>30 September</i>	<i>0707</i>	<i>I would like to complain about noise at 0707</i>	<i>Ryanair</i>	<i>Nanti departure on 27 at 7500 ft</i>	
<i>Dunham-on-the-Hill, Chester</i>	<i>2 October</i>	<i>2234</i>	<i>I would like to complain about noise at 2234</i>	<i>Manchester arrival</i>	<i>Manchester arrival at 9200ft</i>	
<i>Dunham-on-the-Hill, Chester</i>	<i>3 October</i>	<i>1635 1750 1850 1920 2234</i>	<i>I would like to complain about noise at 1635 1750 1850 1920 2234</i>	<i>Ryanair & easyJet</i>	<i>4 Nanti departures on 27 all above 6200 ft</i>	

Complainant Area/Address	Date of Incident(s)	Time of Incident(s)	Nature of Complaint	Aircraft Operator	Comment	Action Taken
					<i>& 1 arrival on 27 at 2700 ft</i>	
<i>Dunham-on-the-Hill, Chester</i>	<i>4 October</i>	<i>0632 1210 1332 1902 2100</i>	<i>I would like to complain about noise at 0632 1210 1332 1902 2100</i>	<i>Ryanair & easyJet</i>	<i>1 Nanti departure on 27 at 7200 ft & 4 arrivals on 27 all above 2800 ft</i>	
<i>Dunham-on-the-Hill, Chester</i>	<i>5 October</i>	<i>0940 1450 1810 1817 1850 1855 1905 1906 1920</i>	<i>I would like to complain about noise at 0940 1450 1810 1817 1850 1855 1905 1906 1920</i>	<i>Ryanair & easyJet</i>	<i>9 Nanti departures on 09 all above 3700ft</i>	
<i>Dunham-on-the-Hill, Chester</i>	<i>7 October</i>	<i>1805</i>	<i>I would like to complain about noise at 1805</i>	<i>easyJet</i>	<i>1 arrival on 27 at 3200 ft</i>	
<i>Dunham-on-the-Hill, Chester</i>	<i>9 October</i>	<i>1722 1725</i>	<i>I would like to complain about noise at 1722 1725</i>	<i>Ryanair & easyJet</i>	<i>1 Nanti departure on 27 at 6800 & 1 arrival on 27 at 2100 ft</i>	
<i>Dunham-on-the-Hill, Chester</i>	<i>11 October</i>	<i>2359</i>	<i>I would like to complain about noise at 2359</i>	<i>easyJet</i>	<i>Arrival on 27 at 3600 ft</i>	
<i>Dunham-on-the-Hill, Chester</i>	<i>16 October</i>	<i>1800 1820 1848</i>	<i>I would like to complain about noise at 1800 1820 1848</i>	<i>Thomson fly & easyJet</i>	<i>3 Nanti departures on 27 all above 6200 ft & 1 arrival on 27 at 3300 ft</i>	
<i>Dunham-on-the-Hill, Chester</i>	<i>17 October</i>	<i>1814 1900 2158</i>	<i>I would like to complain about noise at 1814 1900 2158</i>	<i>Ryanair & easyJet</i>	<i>3 arrivals on 27 all over 3000 ft</i>	
<i>Dunham-on-the-Hill, Chester</i>	<i>18 October</i>	<i>0605 0623 0723 0724 0744</i>	<i>I would like to complain about noise at 0605 0623 0723 0724 0744</i>	<i>Ryanair & easyJet</i>	<i>4 Nanti departures on 27 all above 4900 ft & 1 arrival on 27 at 3200 ft</i>	
<i>Dunham-on-the-Hill, Chester</i>	<i>20 October</i>	<i>2305</i>	<i>I would like to complain about noise at 2305</i>	<i>easyJet</i>	<i>Arrival on 27 at 3100 ft</i>	

Complainant Area/Address	Date of Incident(s)	Time of Incident(s)	Nature of Complaint	Aircraft Operator	Comment	Action Taken
<i>Dunham-on-the-Hill, Chester</i>	<i>21 October</i>	<i>0025</i>	<i>I would like to complain about noise at 0025</i>	<i>easyJet</i>	<i>Arrival on 27 at 2800 ft</i>	
<i>Dunham-on-the-Hill, Chester</i>	<i>24 October</i>	<i>1330 1845</i>	<i>I would like to complain about noise at 1330 1845</i>	<i>easyJet</i>	<i>2 arrivals on 27 above 2500 ft</i>	
<i>Dunham-on-the-Hill, Chester</i>	<i>25 October</i>	<i>0845 0855 1705 1820 1825 2345</i>	<i>I would like to complain about noise at 0845 0855 1705 1820 1825 2345</i>	<i>Ryanair & easyJet</i>	<i>3 Nanti departures on 27 all above 4200 ft & 3 arrivals on 27 all above 3100 ft</i>	
<i>Dunham-on-the-Hill, Chester</i>	<i>26 October</i>	<i>1232 1540</i>	<i>I would like to complain about noise at 1232 1540</i>	<i>Ryanair & easyJet</i>	<i>2 arrivals on 27 both above 2800 ft</i>	
<i>Dunham-on-the-Hill, Chester</i>	<i>28 October</i>	<i>1740</i>	<i>I would like to complain about noise at 1740</i>	<i>easyJet</i>	<i>Arrival on 27 at 3100 ft</i>	
<i>Dunham-on-the-Hill, Chester</i>	<i>31 October</i>	<i>1730 1735 1800 1835 1845</i>	<i>I would like to complain about noise at 1730 1735 1800 1835 1845</i>	<i>Ryanair & easyJet</i>	<i>5 Nanti departures on 09 all above 3400 ft</i>	
<i>Dunham-on-the-Hill, Chester</i>	<i>1 November</i>	<i>1022 1030 1035 1135 1705 1838</i>	<i>I would like to complain about noise at 1022 1030 1035 1135 1705 1838</i>	<i>Ryanair & easyJet</i>	<i>6 Nanti departures on 09 all above 3300 ft</i>	
<i>Dunham-on-the-Hill, Chester</i>	<i>2 November</i>	<i>0611 0631 0645 0723 0808 0905</i>	<i>I would like to complain about noise at 0611 0631 0645 0723 0808 0905</i>	<i>Ryanair & easyJet</i>	<i>6 Nanti departures on 09 all above 3200 ft</i>	
<i>Dunham-on-the-Hill, Chester</i>	<i>3 November</i>	<i>0600 0630 0637</i>	<i>I would like to complain about noise at 0600 0630 0637</i>	<i>Ryanair</i>	<i>3 Nanti departures on 09 all above 4300 ft</i>	
<i>Dunham-on-the-Hill, Chester</i>	<i>14 November</i>	<i>2219 2220 2228 2310</i>	<i>I would like to complain about noise at 2219 2220 2228 2310</i>	<i>Ryanair & easyJet</i>	<i>4 arrivals on 27 all above 2700 ft</i>	
<i>Dunham-on-the-Hill, Chester</i>	<i>15 November</i>	<i>1150 1240 1300 1620 2200</i>	<i>I would like to complain about noise at 1150 1240 1300 1620 2200</i>	<i>Ryanair & easyJet</i>	<i>1 Nanti departure on 27 at 5800 ft & 4 arrivals on 27 all above 2300 ft</i>	
<i>Dunham-on-the-Hill,</i>	<i>16 November</i>	<i>1720 1940</i>	<i>I would like to complain about noise</i>	<i>Ryanair &</i>	<i>2 arrivals on 27</i>	

Complainant Area/Address	Date of Incident(s)	Time of Incident(s)	Nature of Complaint	Aircraft Operator	Comment	Action Taken
<i>Chester</i>			<i>at 1720 1940</i>	<i>easyJet</i>	<i>both above 2900 ft</i>	
<i>Dunham-on-the-Hill, Chester</i>	<i>17 November</i>	<i>1905 1932</i>	<i>I would like to complain about noise at 1905 1932</i>	<i>Ryanair & easyJet</i>	<i>1 Nanti departure on 27 at 6500 ft & 1 arrival on 27 at 3200 ft</i>	
<i>Dunham-on-the-Hill, Chester</i>	<i>19 November</i>	<i>1805 1952</i>	<i>I would like to complain about noise at 1805 1952</i>	<i>Ryanair</i>	<i>2 Nanti departures on 27 both above 3100</i>	
<i>Dunham-on-the-Hill, Chester</i>	<i>20 November</i>	<i>1115 1215 1227 1845</i>	<i>I would like to complain about noise at 1115 1215 1227 1845</i>	<i>Ryanair, easyJet & Airbus Industries</i>	<i>4 arrivals on 27 all above 2200 ft</i>	
<i>Dunham-on-the-Hill, Chester</i>	<i>21 November</i>	<i>0645 1230 1240 2212</i>	<i>I would like to complain about noise at 0645 1230 1240 2212</i>	<i>Ryanair & easyJet</i>	<i>1 Nanti departure on 27 at 5900 ft & 3 arrivals on 27 both above 2800 ft</i>	
<i>Dunham-on-the-Hill, Chester</i>	<i>2 December</i>	<i>1635</i>	<i>I would like to complain about noise at 1635</i>	<i>Thomson fly</i>	<i>Arrival on 27 At 3200 ft</i>	
<i>Dunham-on-the-Hill, Chester</i>	<i>10 December</i>	<i>1900 2055</i>	<i>I would like to complain about noise at 1900 2055</i>	<i>Ryanair & easyJet</i>	<i>2 arrivals on 27 both above 2900 ft</i>	
<i>Dunham-on-the-Hill, Chester</i>	<i>16 December</i>	<i>1000</i>	<i>I would like to complain about noise at 1000</i>	<i>easyJet</i>	<i>1 Nanti departure on 27 at 4300 ft</i>	
<i>Dunham-on-the-Hill, Chester</i>	<i>17 December</i>	<i>1905</i>	<i>I would like to complain about noise at 1905</i>	<i>Hawarden arrival</i>	<i>Hawarden arrival at 3200 ft</i>	
<i>Dunham-on-the-Hill, Chester</i>	<i>23 December</i>	<i>1835 1850 2240</i>	<i>I would like to complain about noise at 1835 1850 2240</i>	<i>easyJet</i>	<i>3 arrivals on 27 all above 2100 ft</i>	
<i>Dunham-on-the-Hill, Chester</i>	<i>24 December</i>	<i>1300</i>	<i>I would like to complain about noise at 1300</i>	<i>Ryanair</i>	<i>Arrival on 27 at 2000 ft</i>	
<i>Dunham-on-the-Hill, Chester</i>	<i>26 December</i>	<i>0710 0750 1230 1235</i>	<i>I would like to complain about noise at 0710 0750 1230 1235 1540 1732</i>	<i>Ryanair & easyJet</i>	<i>6 Nanti departures on 09</i>	

Complainant Area/Address	Date of Incident(s)	Time of Incident(s)	Nature of Complaint	Aircraft Operator	Comment	Action Taken
		<i>1540 1732</i>			<i>all above 2600 ft</i>	
<i>Dunham-on-the-Hill, Chester</i>	<i>27 December</i>	<i>0750 1615</i>	<i>I would like to complain about noise at 0750 1615</i>	<i>Ryanair & easyJet</i>	<i>2 Nanti departures on 09 both above 3800 ft</i>	
<i>Dunham-on-the-Hill, Chester</i>	<i>28 December</i>	<i>1750 1850</i>	<i>I would like to complain about noise at 1750 1850</i>	<i>Ryanair</i>	<i>2 Nanti departures on 09 both above 2900 ft</i>	
<i>Dunham-on-the-Hill, Chester</i>	<i>30 December</i>	<i>0720</i>	<i>I would like to complain about noise at 0720</i>	<i>easyJet</i>	<i>Nanti departure on 09 at 2900 ft</i>	
<i>Dunham-on-the-Hill, Chester</i>	<i>31 December</i>	<i>1245 1249</i>	<i>I would like to complain about noise at 1245 1249</i>	<i>Ryanair & easyJet</i>	<i>7 arrivals on 27 both at 2400 ft</i>	